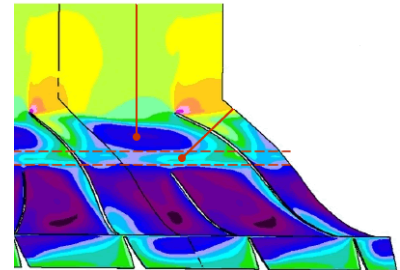


The Smoke Control Association (SCA) is an independent body of experts all involved in various aspects of the smoke control sector. The Association works in many fields including the publication of guides related to smoke control systems and products.

During the past 10 years, these guides have included methods for testing smoke extract fans, natural ventilators and smoke curtains which were subsequently adopted by BSI in the BS 7346 range of standards, ultimately being embraced in the EN 12101 European Standards series. Current projects being undertaken by the Association includes work on **Computational Fluid Dynamics (CFD) modelling** in various aspects of smoke control in buildings.

The role of CFD is becoming more prevalent in the world of smoke control, but how can we guarantee that the information that we receive is reliable? The SCA has established a working group, involving many of the industry's experts and other interested parties to answer this and other questions and has set a standard for the formation and application of CFD analysis in its new guidance publication "*CFD Modelling for Car Park Ventilation Systems – a guide for designers and regulators*".



The Smoke Control Association is keen to promote best practice in the industry, particularly when associated with life safety systems. One example is promoting the use of the latest European standard **EN 12101-3** for the testing of smoke extract fans.



In the fire protection-market life safety is the foremost concern and it is essential that product standards are relevant to the risks being protected. The new European Standard (BS EN12101-3) for powered smoke and heat exhaust ventilators has achieved this objective. The BS EN 12101-3 has now been harmonised into EU legislation and since 1st of February 2005 it has been a mandatory requirement for these safety critical products to carry the CE marking. SCA members can offer advice on this standard if needed.

Smoke Control in Residential Buildings

The SCA believes that a lead is required in this confusing, but vitally important area. To this end it has set up a working group to assess the best way to standardise this area and to find the safest, consistent solutions to the protection of the many residential apartments that are being built.



More information

For more information, copies of the CFD modelling guide or a list of companies in the SCA please contact the SCA at the FETA offices in Reading on 0118 940 3416 or by email to info@feta.co.uk. For list of members, see [SCA Members](#).